



## **Vehari Municipal Committee**

### **Energy Management Plan (EMP)**

**July 2023**

## History of the Document

Version	Date	Description
01	July 06 , 2023	First Draft

Client Name	Punjab Municipal Development Fund Company (PMDFC)	Contract No.	PK-PMDFC-318212-CS-CQS
Assignment	Assignment No-II: Energy Audit & Management	Version	01
Municipal Committee	Vehari, Punjab	Page 2 of 15	

## Disclaimer

World Bank Group creates opportunity for people to escape poverty and improve their lives. It fosters sustainable economic growth in developing countries by supporting private sector development, mobilizing private capital, and providing advisory and risk mitigation services to businesses and governments.

The conclusions and judgments contained in this report should not be attributed to, and do not necessarily represent the views of, World Bank or its Executive Directors, or the countries they represent. World Bank do not guarantee the accuracy of the data in this publication and accept no responsibility for any consequences of their use.

Client Name	Punjab Municipal Development Fund Company (PMDFC)	Contract No.	PK-PMDFC-318212-CS-CQS
Assignment	Assignment No-II: Energy Audit & Management	Version	01
Municipal Committee	Vehari, Punjab	Page 3 of 15	

## ACKNOWLEDGEMENT

PITCO expresses its sincere gratitude to the World Bank & Punjab Municipal Development Fund Company (PMDFC) team for their role in guiding and steering Punjab Energy Efficient Municipal Service Delivery program. The consultant is grateful to the World Bank-Pakistan for vesting its confidence in the team for carrying out this prominent assignment for the identification of energy efficiency interventions in Municipal Committee and for their full-fledged cooperation and support throughout the study.

The Consultant is also grateful to entire Vehari Municipal Committee representatives for their support extended during the field study.

Client Name	Punjab Municipal Development Fund Company (PMDFC)	Contract No.	PK-PMDFC-318212-CS-CQS
Assignment	Assignment No-II: Energy Audit & Management	Version	01
Municipal Committee	Vehari, Punjab	Page 4 of 15	

## Table of Contents

<b>1</b>	<b>SUMMARY .....</b>	<b>8</b>
1.1	PROJECT BACKGROUND .....	8
1.2	SCOPE OF WORK.....	8
1.3	INTRODUCTION .....	8
1.4	VEHARI MC BACKGROUND .....	9
1.5	OBJECTIVES .....	9
1.6	ENERGY SUPPLY MANAGEMENT .....	9
1.7	SUMMARY OF OBSERVATIONS AND RECOMMENDATIONS .....	9
1.8	CURRENT ENERGY USE .....	11
<b>2</b>	<b>ENERGY MANAGEMENT PLAN .....</b>	<b>12</b>
2.1	ENERGY USE MANAGEMENT .....	12
2.2	BASELINE ENERGY CONSUMPTION TREND .....	12
2.3	TYPES OF MEASURES .....	12
2.4	ACTION LIST .....	13
2.5	MONITORING PROGRESS AND REPORTING .....	15

Client Name	Punjab Municipal Development Fund Company (PMDFC)	Contract No.	PK-PMDFC-318212-CS-CQS
Assignment	Assignment No-II: Energy Audit & Management	Version	01
Municipal Committee	Vehari, Punjab	Page 5 of 15	

**List of Tables**

Table 1: Baseline Energy Data ..... 11

Table 2: KPIs for Potable Water & Wastewater pumps ..... 11

Table 3: KPIs for Streetlights ..... 11

Table 4: KPIs for Buildings ..... 11

Table 5: KPIs for Vehicles..... 12

Client Name	Punjab Municipal Development Fund Company (PMDFC)	Contract No.	PK-PMDFC-318212-CS-CQS
Assignment	Assignment No-II: Energy Audit & Management	Version	01
Municipal Committee	Vehari, Punjab	Page 6 of 15	

## ABBREVIATIONS

<b>CFMS</b>	Computerized Financial Management System
<b>CTS</b>	Complaint Tracking System
<b>DCS</b>	Distributed Control System
<b>EMP</b>	Energy Management Plan
<b>ESMAP</b>	Energy Sector Management Assistance Program
<b>EE</b>	Energy Efficiency
<b>MEPCO</b>	Multan Electric Power Company
<b>GHG</b>	Green House Gases
<b>GIS</b>	Geographical Information System
<b>GoPb</b>	Government of Punjab
<b>ICB</b>	International Competitive Bidding
<b>KPI</b>	Key Performance Indicators
<b>MC</b>	Municipal Committee
<b>PCP</b>	Punjab Cities Program
<b>PMDFC</b>	Punjab Municipal Development Fund Company
<b>PMS</b>	Performance Management System
<b>PMSIP</b>	Punjab Municipal Services Improvement Project
<b>SNGPL</b>	Sui Northern Gas Pipelines Limited
<b>TMA</b>	Tehsil Municipal Authority
<b>TOR</b>	Terms of Reference
<b>WBG</b>	World Bank group

Client Name	Punjab Municipal Development Fund Company (PMDFC)	Contract No.	PK-PMDFC-318212-CS-CQS
Assignment	Assignment No-II: Energy Audit & Management	Version	01
Municipal Committee	Vehari, Punjab	Page 7 of 15	

# 1 Summary

## 1.1 Project Background

The Punjab Cities Program (PCP) is a World Bank-funded hybrid of Program for Results (PforR) and Investment Project Financing (IPF) operation. It is a USD 200 million 5 years (2018 -2023) program supporting 16 cities in Punjab. The main objective of the program is to strengthen the performance of participating Municipal Committees/Corporations (MCs), focusing on urban management and improvement of municipal infrastructure for satisfactory service delivery.

Under the PforR (Window-1) the Performance Based Grants (PBGs) are being provided to the MCs of the 16 selected cities for investments in municipal infrastructure and services.

The IPF (Window-2) is supporting provincial government agencies i.e. Local Government & Community Development Department (LG&CDD), Punjab Local Government Board (PLGB), Punjab Municipal Development Fund Company (PMDFC), and PFC Unit of Finance Department (FD).

## 1.2 Scope of work

As per the scope of work specified in the Terms of Reference of the project, the Consultant is required to:

- a) develop a detailed work program for carrying out the works immediately after mobilizing
- b) prepare an inventory of relevant assets owned/operated by the MC, including municipal buildings, vehicles, streetlights, and water-supply/wastewater disposal pumps
- c) collect additional information on location (where applicable), performance and energy consumption analysis, estimation of expenditure incurred
- d) provide detailed information for each asset, and an overall inventory and analytical report discussing key performance indicators
- e) identify energy saving opportunities, and provide saving potential (in energy and monetary terms) for each opportunity, estimated investment costs and return on investments, engineering plans, and Bill of Quantities, as needed.

The outputs of the abovementioned activities are presented in the Vehari Energy Audit Report and have been used to develop the Energy Management Plan for Vehari MC, which includes short-, medium-, and long-term measures to optimize energy consumption in municipal service delivery.

## 1.3 Introduction

Integration of energy efficient practices into the “business as usual” conduct of the organization, regular assessment of energy performance, and implementation of procedures and measures to reduce energy waste and increase efficiency are key to successful energy management. Regardless of the size of the municipality, the common element of successful energy management is the allocation of staff and resources to continually improve energy performance.

This document builds upon the energy audit report and establishes an energy management plan with precise energy efficiency goals and targets for the municipality. An Excel based monitoring and reporting tool forms an integral part of the EMP for the MC to keep itself abreast of its energy use and implementation status of various EE measures proposed under this EMP.

Adhering to EMP will allow the MC to

- a) Monitor its energy performance and to minimize the energy costs of municipal services;

Client Name	Punjab Municipal Development Fund Company (PMDFC)	Contract No.	PK-PMDFC-318212-CS-CQS
Assignment	Assignment No-II: Energy Audit & Management	Version	01
Municipal Committee	Vehari, Punjab	Page 8 of 15	



- b) Calculate the Key Performance Indicators (KPIs) for Pumping & Disposal, Streetlights, Buildings, Vehicles; and
- c) Reduce the carbon footprint associated with its energy use.

#### 1.4 Vehari MC Background

Vehari town is the headquarters of the Vehari district in the lower region of the Punjab province. It is located about a 100 km away from the famous city of Multan. The city is located at 30.0419 N, 72.3527 E. The district was created in 1976 out of the three tehsils of Multan District (Vehari, Burewala and Mailsi). The name Vehari means low lying settlement by a flood water channel. The district lies along the right bank of the river Sutlej which forms its southern boundary.

#### 1.5 Objectives

Water supply tube wells, disposal pumps, municipal vehicles, and street lights has trivial energy consumption. The MC’s assets are working inefficiently giving less benefits with maximum usage of utilities. The overall objective of this audit activity is to make sure the exact count of assets, identify efficient resources & replacement of inefficient ones with new competent resources.

Energy management plan gives the better idea for the optimum usage of energy resources which will ultimately result in scaling down energy consumption. EMP gives the fruitful result by monitoring the operations in more organized way. Prime goal of this activity will be managing efficient utilization of resources maintaining the environmental standards reducing carbon emissions.

#### 1.6 Energy Supply Management

Energy is supplied to the Vehari MC via a number of providers as outlined below:

- Electricity for pumps and buildings is supplied by MEPCO.
- Electricity for streetlights is supplied by MEPCO as per Public Lighting tariff.
- Natural gas is supplied to the municipality by SNGPL.
- Vehari MC has a purchasing agreement with fuel/pump stations wherein all municipal vehicles get their fuel refills from specified pumping stations.

#### 1.7 Summary of Observations and Recommendations

A summary of observations and recommendations is given below:

##### 1.7.1 Water Pumping System

- Sluice valve at 6 pump sites were either jammed or broken and need to be replaced.
- Air release valves installed on the network should be properly maintained.
- Installation and replacement of capacitors have been recommended where Power Factor was found to be below 0.8 since a penalty is being charged by DISCO for PF lower than 0.9. A total of 06 Pumpsets had a power factor below 0.8.
- It is recommended to replace pumps at following sites:
  - Sharqi colony WW - Unique ID: 31506486
  - 24 WB Canal Tube Well #3 - Unique ID: 31506508
  - H Block WW – Unique ID: 31506490-1
- Reschedule operational hours of the pumps to avoid peak charges.

Client Name	Punjab Municipal Development Fund Company (PMDFC)	Contract No.	PK-PMDFC-318212-CS-CQS
Assignment	Assignment No-II: Energy Audit & Management	Version	01
Municipal Committee	Vehari, Punjab	Page 9 of 15	

- Smart Metering integrated with DCS system is recommended at all tubewells. It is necessary to develop water balance, demand forecast, monitoring of energy efficiency and line leakages. Furthermore, this will act as a precursor to water metering and billing for consumers.

### 1.7.2 Dewatering Sets

- Operational logs were not available with the MC. It is recommended to maintain operational log of dewatering sets, containing details of fuel consumption, location of activity and operational hours.

### 1.7.3 Wastewater Disposal System

- Filter Wanes of Disposal system require periodic cleaning.
- No record of periodic maintenance and cleaning at the disposal system.
- Installation and replacement of capacitors have been recommended where Power Factor was found to be below 0.8 since a penalty is being charged by DISCO for PF lower than 0.9. A total of 11 disposal Pumpsets had a power factor below 0.8.

### 1.7.4 Streetlight

- Out of the total 2732 streetlights in the MC, only 1501 streetlights are operational.
- All the lights are MC operated
- The MC has no record and database of streetlights. It is recommended to develop GIS based database for all streetlights within the MC to record all operation and maintenance related activities of the streetlights.
- Asset tagging should be carried out for every streetlight pole and other fixtures related to Streetlight.
- It is recommended to install photo-electric switches for energy conservation.
- Periodic maintenance regime should be implemented for efficient resource utilization and operational cost savings.
- The consultant has not proposed solar powered streetlights as an alternative to conventional grid powered streetlights because the pilot projects carried out by NHA related to the former have not been successful due to their extensive O&M requirements. Secondly, roads/pathways inside the city do not receive sufficient amount of solar irradiation, hence not optimal for installation of solar powered lights.

### 1.7.5 Vehicles

- All non-registered vehicles must get registered immediately to avoid any misuse.
- O&M cost of all the vehicles should be properly logged to calculate the efficiency of the vehicles
- Tracking devices should be installed on the MC's existing fleet.
- All old and non-functional vehicles (10 years or more) should be sold in the open market through transparent auction scheme.

### 1.7.6 Buildings

- Old conventional tube-lights, Incandescent light bulbs, and CFLs are being used in the building; these need to be replaced with energy efficient LED lights
- 2 Window ACs are installed in the municipal building. It is recommended to replace these AC with more energy efficient inverter based split AC.

Client Name	Punjab Municipal Development Fund Company (PMDFC)	Contract No.	PK-PMDFC-318212-CS-CQS
Assignment	Assignment No-II: Energy Audit & Management	Version	01
Municipal Committee	Vehari, Punjab	Page 10 of 15	

## 1.8 Current Energy Use

The baseline energy consumption at Vehari as well as the KPIs for pumping, lighting, buildings, and vehicles are given below.

Table 1: Baseline Energy Data

Particulars	Unit	Value	Source
Electrical energy used by Tubewells <sup>1</sup>	kWh/year	1,050,628	Utility bills
Electrical energy used by Wastewater Disposal <sup>2</sup>	kWh/year	442,868	Utility bills
Electrical energy used in Buildings <sup>3</sup>	kWh/year	95,244	Utility bills
Electrical energy used by Streetlights <sup>4</sup>	kWh/year	342,829	Utility bills
Diesel used by Vehicles	liter/year	52,284	Vehicle logbooks
Petrol used by Vehicles	liter/year	912	Vehicle logbooks

Table 2: KPIs for Potable Water & Wastewater pumps

Sr. No.	Description	Unit	KPI
1	Energy Density of Potable Water Production	(kWh/m <sup>3</sup> )	0.25
2	Energy Density of Wastewater Disposal	(kWh/m <sup>3</sup> )	0.06
3	Energy Density of Wastewater Treatment	(kWh/m <sup>3</sup> ) – if applicable	No wastewater treatment is carried out.
4	Energy Cost of Potable Water Production	(PKR/m <sup>3</sup> )	11.17
5	Energy Cost of Wastewater Disposal	(PKR/m <sup>3</sup> )	2.62
6	Energy Cost of Wastewater Treatment	(PKR/m <sup>3</sup> ) – if applicable	No wastewater treatment is carried out.

Table 3: KPIs for Streetlights

Sr. No.	Description	Unit	KPI
1	Average electricity consumed per kilometer of lit roads	(kWh/km)	2,689
2	Average electricity consumed per light pole/fixture	(kWh/year/fixture)	79
3	Average cost of purchase of (i) pole/fixture and (ii) lighting equipment	PKR/Pole	45,740
		PKR/Lighting Equipment	44,250
4	Average cost of installation of (i) pole/fixture and (ii) lighting equipment	PKR/Pole	1,254
		PKR/Lighting Equipment	370
5	Average annual maintenance costs	(PKR)	554,770
6	Average daily duration of operation	(Hours)	12
7	Average energy costs per kilometer of lit roads	(PKR/km)	121,016
8	Average energy costs per light pole/fixture	(PKR/ fixture)	6,450
9	Number and percentage of failed public lights (Total)		45%

Table 4: KPIs for Buildings

Sr. No	Description	Unit	KPI
1	Municipal Buildings Electricity Consumption	(kWh/m <sup>2</sup> )	4.67
2	Municipal Buildings Heat Consumption	(kWh/m <sup>2</sup> )	0.34

<sup>1</sup> Based on 12-month historical billing data

<sup>2</sup> Based on 12-month historical billing data

<sup>3</sup> Based on 12-month historical billing data

<sup>4</sup> Based on 12-month historical billing data

Client Name	Punjab Municipal Development Fund Company (PMDFC)	Contract No.	PK-PMDFC-318212-CS-CQS
Assignment	Assignment No-II: Energy Audit & Management	Version	01
Municipal Committee	Vehari, Punjab		Page 11 of 15

Sr. No	Description	Unit	KPI
3	Average Energy Cost of Heating	(PKR/m <sup>2</sup> )	15
4	Average Energy Cost of Cooling	(PKR/m <sup>2</sup> )	100
5	Average Energy Cost of Lighting	(PKR/m <sup>2</sup> )	53

Table 5: KPIs for Vehicles

Sr. No.	Description	Unit	KPI
1	Fuel consumption for staff transport vehicles	km/Liter	Cannot be Determined
2	Fuel consumption for solid/liquid waste transport	km/Liter	4.85
3	Expenditure on fuel for staff transport vehicles	PKR/km	Cannot be Determined
4	Expenditure on fuel for solid/liquid waste transport	PKR/km	60

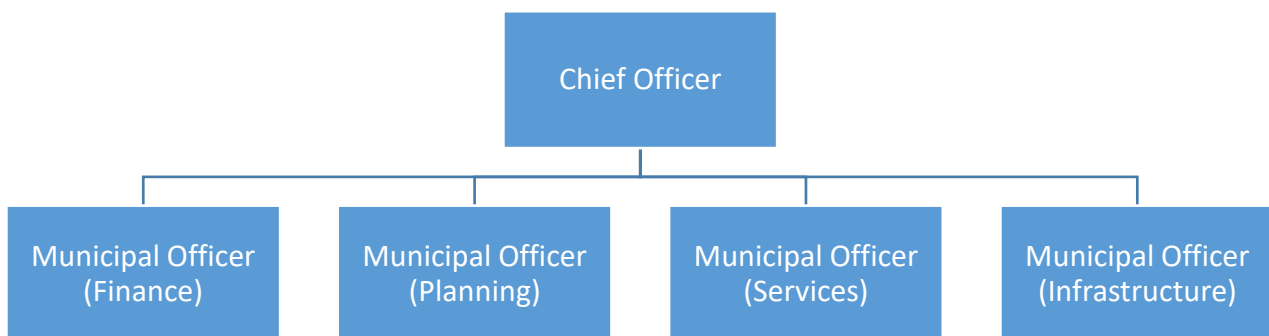
## 2 Energy Management Plan

### 2.1 Energy Use Management

The overall management of energy is primarily the responsibility of the Chief Officer. To aid in the efforts to track and reduce energy consumption in the MC, the Chief Officer will ensure effective monitoring and reporting, using the Excel based template, by the respective departments.

### 2.2 Baseline Energy Consumption Trend

The figure below shows the proposed structure of the MC energy management team:



Based on the above, the following roles have been assigned to the relevant officers:

- Energy Leader: The Chief Officer has been designated as energy leader with overall responsibility for energy management.
- Energy Team: The Energy Leader in consultation with the Municipal Officers shall identify staff members and personnel who will oversee implementation of energy efficiency measures and review their performance.

### 2.3 Types of Measures

Recommended EE measures are categorized into high, medium and low priority measures. High priority EE measures are those which shall be implemented immediately (within 1 year) to meet the baseline demand, medium term measures may be implemented in the near future (within 2-3 years' time) and low priority measures may be implemented in the remote future (within 3-5 years' time).

Client Name	Punjab Municipal Development Fund Company (PMDFC)	Contract No.	PK-PMDFC-318212-CS-CQS
Assignment	Assignment No-II: Energy Audit & Management	Version	01
Municipal Committee	Vehari, Punjab	Page 12 of 15	

## 2.4 Action List

MC Vehari's annual energy consumption is 2,467,767 kWh which is mainly in the form of electricity (water supply, buildings & streetlights) and fuel for vehicles. The study has helped in successfully identifying resource and energy efficiency improvement measures which will help:

- Yield annual savings of **US\$ 12,919** with an estimated investment of **US\$ 291,389**
- Reduce electricity consumption by approx. **80,440 kWh**.
- Reduce GHG Emissions by **41 tCO<sub>2</sub>/y**

Sr. No.	Section	High Priority Energy Efficiency Measure	Electricity Saving	Investment Cost	Investment Cost	Monetary Savings	Monetary Savings	Simple Payback	Annual Emission Reduction	Responsible Person	Timeline
			kWh/y	US \$	PKR	US \$/y	PKR/y	Months	tCO <sub>2</sub> /y		
1	Pumping and Disposal	Replacement of Pumpset at (Sharqi colony WW - Unique ID: 31506486)	22,670	2,631	737,100	3,641	1,020,153	9	11	TBA by the Energy Leader	Within 1year
2	Pumping and Disposal	Replacement of Pumpset at (24 WB Canal Tube Well #3 - Unique ID: 31506508)	31,081	4,026	1,128,002	4,992	1,398,659	10	16	TBA by the Energy Leader	Within 1year
3	Pumping and Disposal	Replacement of Pumpset at (H Block WW - Unique ID: 31506490-1)	8,287	2,297	643,500	1,331	372,913	21	4	TBA by the Energy Leader	Within 1year
4	Pumping and Disposal	Replacement/Installation of Capacitors	Not Quantifiable	1,725	483,345	Not Quantifiable	Months	Not Quantifiable	Not Quantifiable	TBA by the Energy Leader	Within 1year
5	Streetlights	Installation of LEDs at all non-functional MC operated streetlights	Not Quantifiable	226,001	63,325,515	Not Quantifiable	Not Quantifiable	Not Quantifiable	Not Quantifiable	TBA by the Energy Leader	Within 1year
6	Buildings	Replacement of inefficient equipment in the buildings	16,571	2,430	680,940	2,661	745,674	11	8	TBA by the Energy Leader	Within 1year
<b>Total:</b>			<b>78,609</b>	<b>239,110</b>	<b>66,998,402</b>	<b>12,625</b>	<b>3,537,399</b>	<b>51</b>	<b>40</b>		

Sr. No.	Section	Medium Priority Energy Efficiency Measure	Electricity Saving	Investment Cost	Investment Cost	Monetary Savings	Monetary Savings	Simple Payback	Annual Emission Reduction	Responsible Person	Timeline
			kWh/y	US \$	PKR	US \$/y	PKR/y	Months	tCO <sub>2</sub> /y		
1	Streetlights	Replacement of existing MC operated non efficient streetlights with LEDs	1,831	3,280	919,098	294	82,388	134	1	TBA by the Energy Leader	Within 2-3 years
<b>Total:</b>			<b>1,831</b>	<b>3,280</b>	<b>919,098</b>	<b>294</b>	<b>82,388</b>	<b>134</b>	<b>1</b>		

Client Name	Punjab Municipal Development Fund Company (PMDFC)	Contract No.	PK-PMDFC-318212-CS-CQS
Assignment	Assignment No-II: Energy Audit & Management	Version	01
Municipal Committee	Vehari, Punjab	Page 13 of 15	

Sr. No	Section	Low Priority Energy Efficiency Measure	Water Savings m <sup>3</sup> /y	Investment Cost US \$	Investment Cost PKR	Monetary Savings US \$/y	Monetary Savings PKR/y	Simple Payback Months	Annual Emission Reduction tCO <sub>2</sub> /y	Responsible Person	Timeline
1	Pumping and Disposal	Installation of Flow meters integrated with a centralized DCS system	20,874	49,000	13,729,800	0	0	0	Not Quantifiable	TBA by the Energy Leader	Within 3-5 years
		<b>Total:</b>	<b>20,874</b>	<b>49,000</b>	<b>13,729,800</b>	<b>0</b>	<b>0</b>	<b>0</b>			

Client Name	Punjab Municipal Development Fund Company (PMDFC)	Contract No.	PK-PMDFC-318212-CS-CQS
Assignment	Assignment No-II: Energy Audit & Management	Version	01
Municipal Committee	Vehari, Punjab	Page 14 of 15	

## 2.5 Monitoring Progress and Reporting

An Excel based monitoring and reporting tool, provided along with the EMP, shall be used for monitoring on monthly basis the following:

- Status of implementation of energy efficiency measures
- Energy consumption for tubewells & disposal works, vehicles, streetlights and buildings.
- Impacts of energy efficiency projects

The Energy Leader (under section 2.4) will assign focal persons responsible for implementation of each EE measure. They will also be responsible for filling out information in the excel based reporting and monitoring tool on a monthly basis and submitting the report to the Energy leader who, in turn, will be responsible for submitting the same to PMDFC on monthly basis.

Client Name	Punjab Municipal Development Fund Company (PMDFC)	Contract No.	PK-PMDFC-318212-CS-CQS
Assignment	Assignment No-II: Energy Audit & Management	Version	01
Municipal Committee	Vehari, Punjab	Page 15 of 15	