



Jhang Municipal Committee

Energy Management Plan

July 2023

History of the Document

Version	Date	Description
01	July 06, 2023	First Draft

Client Name	Punjab Municipal Development Fund Company (PMDFC)	Contract No.	PK-PMDFC-318212-CS-CQS
Assignment	Assignment No-II: Energy Audit & Management	Version	01
Municipal Committee	Jhang	Page 2 of 14	

Disclaimer

World Bank Group creates opportunity for people to escape poverty and improve their lives. It fosters sustainable economic growth in developing countries by supporting private sector development, mobilizing private capital, and providing advisory and risk mitigation services to businesses and governments.

The conclusions and judgments contained in this report should not be attributed to, and do not necessarily represent the views of, World Bank or its Executive Directors, or the countries they represent. World Bank do not guarantee the accuracy of the data in this publication and accept no responsibility for any consequences of their use.

Client Name	Punjab Municipal Development Fund Company (PMDFC)	Contract No.	PK-PMDFC-318212-CS-CQS
Assignment	Assignment No-II: Energy Audit & Management	Version	01
Municipal Committee	Jhang	Page 3 of 14	

ACKNOWLEDGEMENT

PITCO expresses its sincere gratitude to the World Bank & Punjab Municipal Development Fund Company (PMDFC) team for their role in guiding and steering Punjab Energy Efficient Municipal Service Delivery program. The consultant is grateful to the World Bank-Pakistan for vesting its confidence in the team for carrying out this prominent assignment for the identification of energy efficiency interventions in Municipal Committee and for their full-fledged cooperation and support throughout the study.

The Consultant is also grateful to entire Jhang Municipal Committee representatives for their support extended during the field study.

Client Name	Punjab Municipal Development Fund Company (PMDFC)	Contract No.	PK-PMDFC-318212-CS-CQS
Assignment	Assignment No-II: Energy Audit & Management	Version	01
Municipal Committee	Jhang	Page 4 of 14	

Table of Contents

1	SUMMARY	8
1.1	PROJECT BACKGROUND	8
1.2	SCOPE OF WORK.....	8
1.3	INTRODUCTION	8
1.4	JHANG MC BACKGROUND	9
1.5	OBJECTIVES	9
1.6	SUMMARY OF OBSERVATIONS AND RECOMMENDATIONS	9
1.7	ENERGY SUPPLY MANAGEMENT.....	10
1.8	CURRENT ENERGY USE	10
2	ENERGY MANAGEMENT PLAN.....	12
2.1	ENERGY USE MANAGEMENT	12
2.2	BASELINE ENERGY CONSUMPTION TREND	12
2.3	TYPES OF MEASURES	12
2.4	ACTION LIST.....	13
2.5	MONITORING PROGRESS AND REPORTING	14

Client Name	Punjab Municipal Development Fund Company (PMDFC)	Contract No.	PK-PMDFC-318212-CS-CQS
Assignment	Assignment No-II: Energy Audit & Management	Version	01
Municipal Committee	Jhang	Page 5 of 14	

List of Tables

Table 1: Baseline Energy Data	10
Table 2: KPIs for Potable Water & Wastewater pumps	10
Table 3: KPIs for Streetlights	11
Table 4: KPIs for Buildings	11
Table 5: KPIs for Vehicles.....	11

Client Name	Punjab Municipal Development Fund Company (PMDFC)	Contract No.	PK-PMDFC-318212-CS-CQS
Assignment	Assignment No-II: Energy Audit & Management	Version	01
Municipal Committee	Jhang	Page 6 of 14	

ABBREVIATIONS

CFMS	Computerized Financial Management System
CTS	Complaint Tracking System
DCS	Distributed Control System
EMP	Energy Management Plan
ESMAP	Energy Sector Management Assistance Program
EE	Energy Efficiency
FESCO	Faisalabad Electric Supply Company
GHG	Green House Gases
GIS	Geographical Information System
GoPb	Government of Punjab
ICB	International Competitive Bidding
KPI	Key Performance Indicators
MC	Municipal Committee
PCP	Punjab Cities Program
PMDFC	Punjab Municipal Development Fund Company
PMS	Performance Management System
PMSIP	Punjab Municipal Services Improvement Project
SNGPL	Sui Northern Gas Pipelines Limited
TMA	Tehsil Municipal Authority
TOR	Terms of Reference
WBG	World Bank group

Client Name	Punjab Municipal Development Fund Company (PMDFC)	Contract No.	PK-PMDFC-318212-CS-CQS
Assignment	Assignment No-II: Energy Audit & Management	Version	01
Municipal Committee	Jhang	Page 7 of 14	

1 Summary

1.1 Project Background

The Punjab Cities Program (PCP) is a World Bank-funded hybrid of Program for Results (PforR) and Investment Project Financing (IPF) operation. It is a USD 200 million 5 years (2018 -2023) program supporting 16 cities in Punjab. The main objective of the program is to strengthen the performance of participating Municipal Committees/Corporations (MCs), focusing on urban management and improvement of municipal infrastructure for satisfactory service delivery.

Under the PforR (Window-1) the Performance Based Grants (PBGs) are being provided to the MCs of the 16 selected cities for investments in municipal infrastructure and services.

The IPF (Window-2) is supporting provincial government agencies i.e. Local Government & Community Development Department (LG&CDD), Punjab Local Government Board (PLGB), Punjab Municipal Development Fund Company (PMDFC), and PFC Unit of Finance Department (FD).

1.2 Scope of work

As per the scope of work specified in the Terms of Reference of the project, the Consultant is required to:

- a) develop a detailed work program for carrying out the works immediately after mobilizing
- b) prepare an inventory of relevant assets owned/operated by the MC, including municipal buildings, vehicles, streetlights, and water-supply/wastewater disposal pumps
- c) collect additional information on location (where applicable), performance and energy consumption analysis, estimation of expenditure incurred
- d) provide detailed information for each asset, and an overall inventory and analytical report discussing key performance indicators
- e) identify energy saving opportunities, and provide saving potential (in energy and monetary terms) for each opportunity, estimated investment costs and return on investments, engineering plans, and Bill of Quantities, as needed.

The outputs of the abovementioned activities are presented in the Jhang Energy Audit Report and have been used to develop the Energy Management Plan for Jhang MC, which includes short-, medium-, and long-term measures to optimize energy consumption in municipal service delivery.

1.3 Introduction

Integration of energy efficient practices into the “business as usual” conduct of the organization, regular assessment of energy performance, and implementation of procedures and measures to reduce energy waste and increase efficiency are key to successful energy management. Regardless of the size of the municipality, the common element of successful energy management is the allocation of staff and resources to continually improve energy performance.

This document builds upon the energy audit report and establishes an energy management plan with precise energy efficiency goals and targets for the municipality. An Excel based monitoring and reporting tool forms an integral part of the EMP for the MC to keep itself abreast of its energy use and implementation status of various EE measures proposed under this EMP.

Adhering to EMP will allow the MC to

- a) Monitor its energy performance and to minimize the energy costs of municipal services;

Client Name	Punjab Municipal Development Fund Company (PMDFC)	Contract No.	PK-PMDFC-318212-CS-CQS
Assignment	Assignment No-II: Energy Audit & Management	Version	01
Municipal Committee	Jhang	Page 8 of 14	

- b) Calculate the Key Performance Indicators (KPIs) for Pumping & Disposal, Streetlights, Buildings, Vehicles; and
- c) Reduce the carbon footprint associated with its energy use.

1.4 Jhang MC Background

Jhang is a city of Toba Tek Singh District in the Punjab province of Pakistan. The city is located at 31.1500 N 72.6833 E.

1.5 Objectives

The MC's assets such as water supply tube wells, disposal pumps, municipal vehicles, and streetlights have sub-optimal energy consumption and are thus operating inefficiently. The overall objective of the audit activity is to accurately quantify assets, identification of efficiency improvement measures and replacement of inefficient assets with efficient counterparts.

Energy management plan gives the better idea for the optimum usage of energy resources which will ultimately result in scaling down energy consumption. The goal of this activity will be monitoring efficient utilization of resources and reducing carbon emissions.

1.6 Summary of Observations and Recommendations

A summary of observations and recommendations is given below.

1.6.1 Water Pumping System

- All the 3 Pump sites were found non-operational during the audit.

1.6.2 Dewatering Sets

- Operational logs were not available with the MC. It is recommended to maintain operational log of dewatering sets containing details of fuel consumption, location of activity and operational hours.

1.6.3 Wastewater Disposal System

- Filter vanes of Disposal system require periodic cleaning.
- No record of periodic maintenance and cleaning at the disposal system.
- Installation and replacement of capacitors have been recommended where Power Factor was found to be below 0.8 since a penalty is being charged by DISCO for PF lower than 0.9. A total of 10 Disposal Pumpsets had a power factor below 0.8.

1.6.4 Streetlight

- All streetlights in Jhang are MC owned.
- 1,456 street lights were operational out of 7,018 surveyed lights.
- The MC has no record and database of streetlights. It is recommended to develop GIS based database for all streetlights within the MC to record all operation and maintenance related activities of the streetlights.
- Asset tagging should be carried out for every streetlight pole and other fixtures related to Streetlight.
- It is recommended to install photo-electric switches for energy conservation.
- Periodic maintenance regime should be implemented for efficient resource utilization and operational cost savings.
- The consultant has not proposed solar powered streetlights as an alternative to conventional grid powered streetlights because the pilot projects carried out by NHA related to the former have not

Client Name	Punjab Municipal Development Fund Company (PMDFC)	Contract No.	PK-PMDFC-318212-CS-CQS
Assignment	Assignment No-II: Energy Audit & Management	Version	01
Municipal Committee	Jhang	Page 9 of 14	

been successful due to their extensive O&M requirements. Secondly, roads/pathways inside the city do not receive sufficient amount of solar irradiation, hence not optimal for installation of solar powered lights.

1.6.5 Vehicles

- All non-registered vehicles must get registered immediately to avoid any misuse.
- O&M cost of all the vehicles should be properly logged to calculate the efficiency of the vehicles.
- Tracking devices should be installed on the MC's existing fleet.
- All old and non-functional vehicles (10 years or more) should be sold in the open market through transparent auction scheme.

1.6.6 Buildings

- CFLs, ILB, Tube Lights and Mercury Bulb are being used in the building; these need to be replaced with energy efficient LED lights.
- Two 1.5-ton Window AC are installed in the municipal building. It is recommended to replace these AC with more energy efficient inverter based split AC.

1.7 Energy Supply Management

Energy is supplied to the Jhang MC via a number of providers as outlined below:

- Electricity for pumps and buildings is supplied by FESCO.
- Electricity for streetlights is supplied by FESCO as per Public Lighting tariff.
- Natural gas is supplied to the municipality by SNGPL.
- Jhang MC has a purchasing agreement with fuel/pump stations wherein all municipal vehicles get their fuel refills from specified pumping stations.

1.8 Current Energy Use

The baseline energy consumption at Jhang as well as the KPIs for pumping, lighting, buildings, and vehicles are given below.

Table 1: Baseline Energy Data

Particulars	Unit	Value	Source
Electrical energy used by Tubewells ¹	kWh/year	33,108	Utility Bills
Electrical energy used by Wastewater Disposal ²	kWh/year	1,120,078	Utility Bills
Electrical energy used in Buildings ³	kWh/year	81,732	Utility Bills
Electrical energy used by Streetlights ⁴	kWh/year	337,998	Utility Bills
Diesel used by Vehicles	liter/year	70,248	Vehicle Logbooks

Table 2: KPIs for Potable Water & Wastewater pumps

Sr. No.	Description	Unit	KPI
1	Energy Density of Potable Water Production	(kWh/m ³)	No Operational Tubewells

¹ Based on 12-month historical billing data

² Based on 12-month historical billing data

³ Based on 12-month historical billing data

⁴ Based on 12-month historical billing data

Client Name	Punjab Municipal Development Fund Company (PMDFC)	Contract No.	PK-PMDFC-318212-CS-CQS
Assignment	Assignment No-II: Energy Audit & Management	Version	01
Municipal Committee	Jhang	Page 10 of 14	

Sr. No.	Description	Unit	KPI
2	Energy Density of Wastewater Disposal	(kWh/m ³)	0.06
3	Energy Density of Wastewater Treatment	(kWh/m ³)	No wastewater treatment is carried out.
4	Energy Cost of Potable Water Production	(PKR/m ³)	No Operational Tubewells
5	Energy Cost of Wastewater Disposal	(PKR/m ³)	2.50
6	Energy Cost of Wastewater Treatment	(PKR/m ³)	No wastewater treatment is carried out.

Table 3: KPIs for Streetlights

Sr. No.	Description	Unit	KPI
1	Average electricity consumed per kilometer of lit roads	(kWh/km)	1,125
2	Average electricity consumed per light pole/fixture	(kWh/year/fixture)	49
3	Average cost of purchase of (i) pole/fixture and (ii) lighting equipment	PKR/Pole	46,905
		PKR/Lighting Equipment	36,213
4	Average cost of installation of (i) pole/fixture and (ii) lighting equipment	PKR/Pole	1,254
		PKR/Lighting Equipment	370
5	Average annual maintenance costs	(PKR)	543,682
6	Average daily duration of operation	(Hours)	12.0
7	Average energy costs per kilometer of lit roads	(PKR/km)	50,645
8	Average energy costs per light pole/fixture	(PKR/pole)	2,188
9	Number and percentage of failed public lights	%	79%

Table 4: KPIs for Buildings

Sr. No	Description	Unit	KPI
1	Municipal Buildings Electricity Consumption	(kWh/m ²)	4.79
2	Municipal Buildings Heat Consumption	(kWh/m ²)	0.14
3	Average Energy Cost of Heating	(PKR/m ²)	6
4	Average Energy Cost of Cooling	(PKR/m ²)	113
5	Average Energy Cost of Lighting	(PKR/m ²)	41

Table 5: KPIs for Vehicles

Sr. No.	Description	Unit	KPI
1	Fuel consumption for staff transport vehicles	km/Liter	Cannot be Determined
2	Fuel consumption for solid/liquid waste transport	km/Liter	3.99
3	Expenditure on fuel for staff transport vehicles	PKR/km	Cannot be Determined
4	Expenditure on fuel for solid/liquid waste transport	PKR/km	73

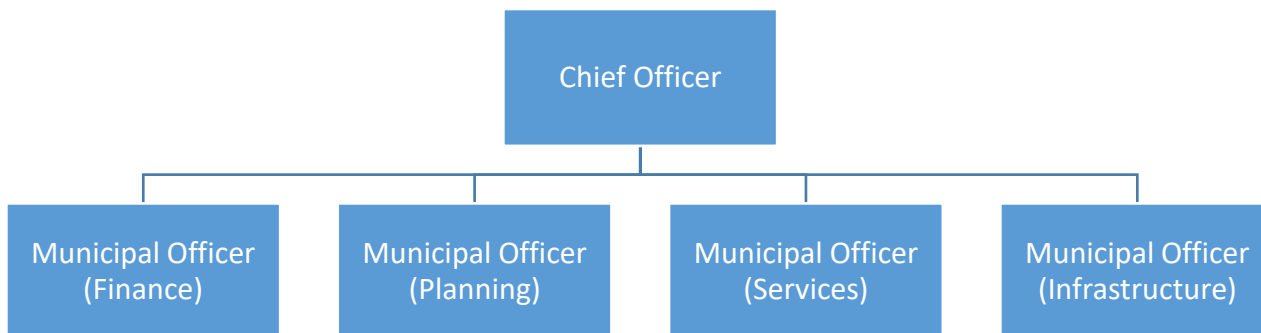
2 Energy Management Plan

2.1 Energy Use Management

The overall management of energy is primarily the responsibility of the Chief Officer. To aid in the efforts to track and reduce energy consumption in the MC, the Chief Officer will ensure effective monitoring and reporting, using the Excel based template, by the respective departments.

2.2 Baseline Energy Consumption Trend

The figure below shows the proposed structure of the MC energy management team:



Based on the above, the following roles have been assigned to the relevant officers:

- Energy Leader: The Chief Officer has been designated as energy leader with overall responsibility for energy management.
- Energy Team: The Energy Leader in consultation with the Municipal Officers shall identify staff members and personnel who will oversee implementation of energy efficiency measures and review their performance.

2.3 Types of Measures

Recommended EE measures are categorized into high, medium and low priority measures. High priority EE measures are those which shall be implemented immediately (within 1 year) to meet the baseline demand, medium term measures may be implemented in the near future (within 2-3 years' time) and low priority measures may be implemented in the remote future (within 3-5 years' time).

Client Name	Punjab Municipal Development Fund Company (PMDFC)	Contract No.	PK-PMDFC-318212-CS-CQS
Assignment	Assignment No-II: Energy Audit & Management	Version	01
Municipal Committee	Jhang	Page 12 of 14	

2.4 Action List

MC Jhang's annual energy consumption is 2,281,651 kWh which is mainly in the form of electricity (water supply, buildings & streetlights) and fuel for vehicles. The study has helped in successfully identifying resource and energy efficiency improvement measures which will help:

- Yield annual savings of **US\$ 1,887** with an estimated investment of **US\$ 23,13615**
- Reduce electricity consumption by approx. **11,751 kWh**
- Reduce GHG Emissions by **5 tCO2/y**

Sr. No.	Section	High Priority Energy Efficiency Measure	Electricity Saving	Investment Cost	Investment Cost	Monetary Savings	Monetary Savings	Simple Payback	Annual Emission Reduction	Responsible Person	Timeline
			kWh/y	US \$	PKR	US \$/y	PKR/y	Months	tCO2/y		
1	Pumping and Disposal	Replacement/Installation of Capacitors	Not Quantifiable	1,350	378,270	Not Quantifiable	Not Quantifiable	Not Quantifiable	Not Quantifiable	TBA by the Energy Leader	Within 1 years
2	Streetlights	Installation of LEDs at all non-functional MC operated streetlights	Not Quantifiable	1,014,286	284,202,966	Not Quantifiable	Not Quantifiable	Not Quantifiable	Not Quantifiable	TBA by the Energy Leader	Within 1 years
3	Buildings	Replacement of inefficient equipment in the buildings	24,448	1,558	436,540	3,926	1,100,174	5	12	TBA by the Energy Leader	Within 1 years
Total:			24,448	1,017,194	285,017,776	3,926	1,100,174		12		

Sr. No.	Section	Medium Priority Energy Efficiency Measure	Electricity Saving	Investment Cost	Investment Cost	Monetary Savings	Monetary Savings	Simple Payback	Annual Emission Reduction	Responsible Person	Timeline
			kWh/y	US \$	PKR	US \$/y	PKR/y	Months	tCO2/y		
1	Streetlights	Replacement of existing MC operated non efficient streetlights with LEDs	N/A	20,228	5,667,771	N/A	N/A	N/A	N/A	TBA by the Energy Leader	Within 2-3 years
Total:			N/A	20,228	5,667,771	N/A	N/A	N/A	N/A		

Client Name	Punjab Municipal Development Fund Company (PMDFC)	Contract No.	PK-PMDFC-318212-CS-CQS
Assignment	Assignment No-II: Energy Audit & Management	Version	01
Municipal Committee	Jhang	Page 13 of 14	

2.5 Monitoring Progress and Reporting

An Excel based monitoring and reporting tool, provided along with the EMP, shall be used for monitoring on monthly basis the following:

- Status of implementation of energy efficiency measures
- Energy consumption for tubewells & disposal works, vehicles, streetlights and buildings.
- Impacts of energy efficiency projects

The Energy Leader (under section 2.4) will assign focal persons responsible for implementation of each EE measure. They will also be responsible for filling out information in the excel based reporting and monitoring tool on a monthly basis and submitting the report to the Energy leader who, in turn, will be responsible for submitting the same to PMDFC on monthly basis.

Client Name	Punjab Municipal Development Fund Company (PMDFC)	Contract No.	PK-PMDFC-318212-CS-CQS
Assignment	Assignment No-II: Energy Audit & Management	Version	01
Municipal Committee	Jhang	Page 14 of 14	